

[View this email in your browser](#)



The Corner: Inspire Study Insights

The Rundown

Winter 2023
The First Issue

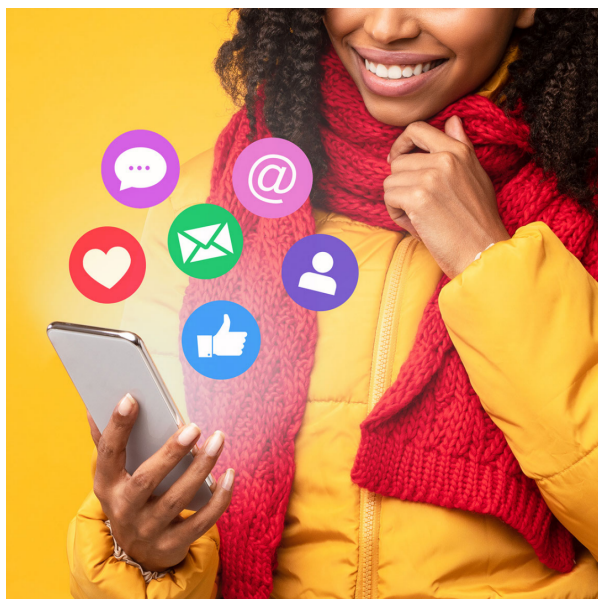
In this edition:

- Welcome to the Corner
- INSPIRE Insights & Milestones
- INSPIRE Study Website is Live
- Meet Dr. Molly Perkins & Louise Savoye
- Resources Corner: Caregiving a Person with Alzheimer's Disease and Dementia Q&A Webinar

Welcome to The Corner

The Corner: Inspire Study Insights is a quarterly newsletter that provides INSPIRE Study updates and behind-the-scenes information, ground-breaking discoveries, and helpful resources for caregivers, dementia and dementia care, and assisted living communities.

INSPIRE Insights & Milestones



Follow us on our Social Media

The INSPIRE Study team is pleased to announce the launch of our social media pages. We are on [Facebook](#) and [LinkedIn](#) as Inspire Study, and on [Twitter](#) and [Instagram](#) as @InspireStudyEU. Feel free to like, comment, follow, and interact with our accounts as we provide the latest information about dementia, caregiving, assisted living facilities, and gerontology.



Welcome to our INSPIRE Study webpage!

A message from the Principal Investigator, Dr. Molly M. Perkins:

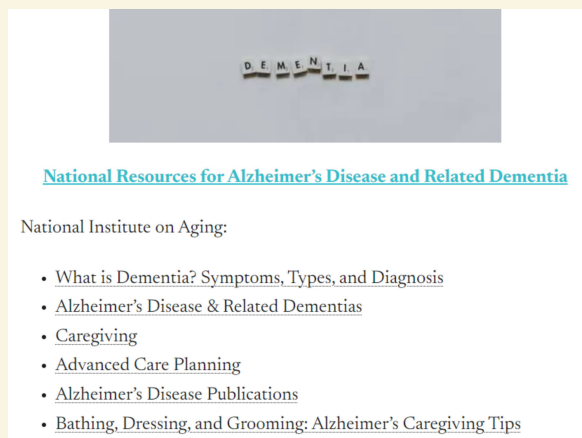
Welcome, and thank you for visiting our study's website. Our INSPIRE Study centers around caregivers of loved ones with advanced dementia in assisted living. The INSPIRE Study is a statewide study designed to learn ways to better support families and others caring for residents in assisted living with advanced dementia. The study is being conducted by a multidisciplinary team of researchers from Emory University's School of Medicine-Division of Geriatrics and Gerontology and the Gerontology Institute at Georgia State University, with extensive expertise in dementia care. The INSPIRE Study is funded by the National Institute on Aging through the National Institutes of Health.

INSPIRE Study Website is Live

At the beginning of the year, the INSPIRE Study website went live. The website provides information about our study, the research team, newsletters, key findings, presentations and publications, ways for contacting and following us on social media, and, most importantly, national and local dementia caregiving resources. Developed and maintained by Dr. Jeffery Lentz, the site aims to be an extension of the study's findings, resources, and information. Dr. Lentz expressed his enthusiasm for the site's launch by

stating, “The website is designed to be able to share resources to caregivers of people with dementia, which we have found to be much needed.” To visit the website, go to <https://emoryinspirestudy.org/> or click on “Learn More” below.

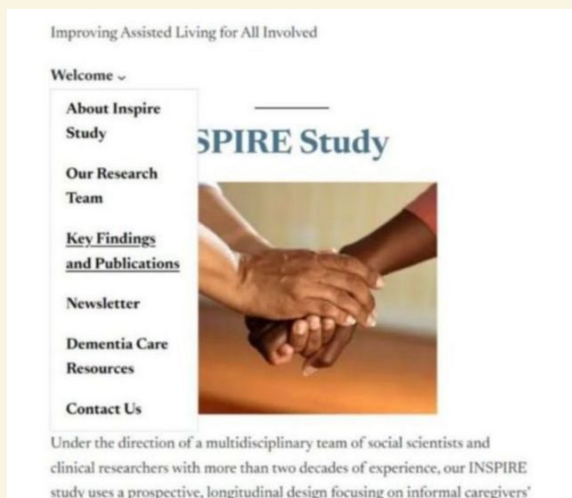
Learn More



[National Resources for Alzheimer's Disease and Related Dementia](#)

National Institute on Aging:

- [What is Dementia? Symptoms, Types, and Diagnosis](#)
- [Alzheimer's Disease & Related Dementias](#)
- [Caregiving](#)
- [Advanced Care Planning](#)
- [Alzheimer's Disease Publications](#)
- [Bathing, Dressing, and Grooming: Alzheimer's Caregiving Tips](#)



Improving Assisted Living for All Involved

Welcome ▾

- About Inspire Study
- Our Research Team
- [Key Findings and Publications](#)
- Newsletter
- Dementia Care Resources
- Contact Us

INSPIRE Study

Under the direction of a multidisciplinary team of social scientists and clinical researchers with more than two decades of experience, our INSPiRE study uses a prospective, longitudinal design focusing on informal caregivers'

Meet Molly

INSPIRE Study Role: Principal Investigator (PI)

Molly M. Perkins, PhD, FGSA is a social gerontologist and medical sociologist at Emory University. She has more than 20 years of experience conducting research in assisted living communities and personal care homes. Much of this recent work centers on dementia care and palliative care. In addition to serving as the PI, Dr. Perkins co-directs the NIH/NIA Roybal Center for Dementia Caregiving Mastery at Emory University and is the Engagement Evaluation Core Lead for the Georgia Memory Net.

- **What inspires you?** Since COVID-19 is lifted, the opportunity to interact with families, residents, administrators and staff within the assisted living communities.



- **What is something you're looking forward to or exciting planned for 2023?** Looking forward to going to the beach and getting a new puppy since we lost our dog during the pandemic.
- **What is your favorite thing about the winter season?** Since I grew up in Southern California, I love seeing the seasons change in the south, including the winter. Also, I like a little but not a lot of snow.



Meet Louise

INSPIRE Study Role: Research Project Manager

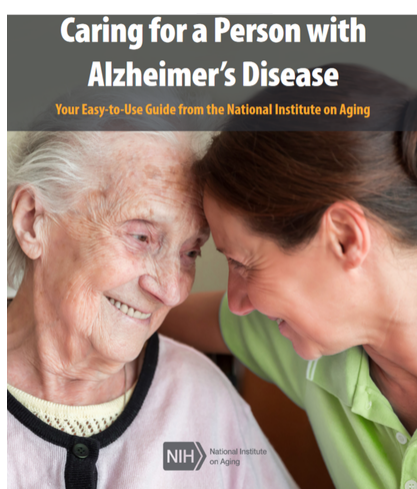
Louise P. Savoye, MD, MPH received an M.D. degree from University of Lyon I in Lyon, France. She obtained a Capacité de Geriatrie and Gériologie and MPH degree. In addition to practicing Geriatric Medicine in Neuville-sur-Saone, France she has over 17 years of experience performing and managing research and clinical trials in various domains such as cardiology, endocrinology and geriatrics.

- **What inspires you?** Travel- it's always inspiring and exciting to discover new landscapes and cultures, sights and sounds, different foods, and different ways of doing things.
- **What is something you're looking forward to or exciting planned for 2023?** Looking forward to some time at the beach in 2023 (nothing planned yet!)
- **What is your favorite thing about the winter season?** A warm, cozy fire in the fireplace

Caregiving a Person with Alzheimer's Disease

The National Institute on Aging created an easy-to-use digital guide on caregiving for persons with Alzheimer's disease.

Learn More



Dementia Q&A Webinar

The Minnesota Northstar Geriatrics Workforce Enhancement Program (GWEP) hosted an interactive webinar featuring an interprofessional panel of experts - a geriatrician, a psychologist, a cultural expert, a physical therapist, a geriatric pharmacist, and a lawyer. This video address questions and concerns related to living with dementia, dementia care, and the key issues that often come up.

Learn More



For these and other Dementia Care Resources, visit <https://emoryinspirestudy.org/dementia-care-resources/>.

Click to Visit the Inspire Study Website



The INSPIRE Study is a statewide study designed to learn ways to better support families and others caring for residents in assisted living with advanced dementia. The study is being conducted by a multidisciplinary team of researchers from Emory University and the Gerontology Institute at Georgia State University with extensive expertise in dementia care, and is funded by the National Institute on Aging.



EMORY
UNIVERSITY
SCHOOL OF
MEDICINE

Division of Geriatrics
and Gerontology



Copyright (C) *|CURRENT_YEAR|* *|LIST:COMPANY|*. All rights reserved.

*|IFNOT:ARCHIVE_PAGE|**|LIST:DESCRIPTION|**|END:IF|*

Our mailing address is:

*|IFNOT:ARCHIVE_PAGE|**|HTML:LIST_ADDRESS_HTML|**|END:IF|*

Want to change how you receive these emails?

You can [update your preferences](#) or [unsubscribe](#)

Grow your business with  **mailchimp**